

OAJA Training Programme

September 2013 – May 2014



Welcome from Director of Training 2

Registration procedures 2

Programme first semester 3

Group supervision colloquia 7

Programme second semester 7

Locations and Maps 12

Calendar of events 13–21

Faculty 22

Office, Library and Bookshop 22

Directory of training candidates 23

Directory of OAJA analysts 24

Comments and questions regarding the programme
may be directed to the Programme Co-ordinator, Graham Jackson

Ontario Association of Jungian Analysts

14 Elm Street,
Toronto ON M5G 1G7
Tel. 416-961-9767
Fax 416-961-6659
www.oaja.ca
info@oaja.ca

*Look for the registration forms for First and
Second semesters in the centre of this booklet.*

Registration deadlines:

- Fall semester: August 16, 2013
- Winter/Spring semester: December 6, 2013

Dear ATP Candidates:

As we enter our fourteenth year of Jungian Analytic Training in Ontario, I would like to extend a sincere welcome to this year's new candidate, Bob Williams, and a warm welcome back to our returning candidates.

The 2013-2014 training programme, which has been organized by our Programme Coordinator, Graham Jackson, has much to offer in both breadth and depth. It promises to be engaging and stimulating for all who participate in these varied offerings.

As the new Director of Training, it is my intention to assist you in the understanding of training regulations and in the fulfillment of training requirements. Please feel free to contact me at 519-265-1360 or pattibrannigan@gmail.com

I would like to thank Caroline Duetz and all former Directors of Training for their assistance in preparing me to assume this role.

Wishing you the very best in the coming year,
Patti Brannigan
Director of Training.

Training Programme Registration Procedures

- 1) Training candidates must pre-register by form for all seminars and workshops in which they wish to participate.
- 2) Where enrolment limitations are specified, registrations will be recorded on a first-come/first-admitted basis once registration has opened.
- 3) In order to equalize mailing times registration will commence on August 1, 2013. Get your registration forms in early. They will be processed in random order by the office beginning on August 1, 2013.
- 4) The deadline for registration will be August 16, 2013 for the first semester and December 6, 2013 for the second semester. Within three business days following registration deadlines, courses with less than five registrants will be cancelled. Those who register for courses that are cancelled will be notified and given one week to register for other courses not yet filled.
N.B. Your pre-registration is very important if courses are to run.
- 5) Register on the accompanying forms by checking course number (1400, 1401, etc.) and title of the offering.
- 6) Send completed forms to the office: 14 Elm Street, Toronto ON M5G 1G7, by mail or fax (416-961-6659). Only mailed or faxed forms will be processed. Forms sent by email will not be accepted. Your registration form will be returned, as your official record, confirming your choices and/or advising you of adjustments where necessary.
- 7) ***N.B. Should you register for two concurrently running courses, the office will register you for the first-named course only.***
- 8) ***Unregistered candidates will not be admitted to courses.***
- 9) Non-attendance has been a problem. This is discourteous to presenters and to fellow candidates who may be on a waiting list. Registration carries with it the responsibility to attend, which is why candidates sign an attendance form for each class. Please advise the office and the presenter as soon as you know you are unable to attend. Personal emergencies are, of course, given consideration; but in a country like ours, that does not (most times) include the weather. Non-attendance may affect your registration in future semesters.

First Semester – Fall 2013

1400 Public Lecture **Mary Tomlinson**
What Is It About A Mystery? Why Detective Stories Hold Us
In Their Thrall

Thurs., Sep. 19 7:30-9:30pm

Studio, Arts and Letters Club, 14 Elm St.

There is an archetypal thrall about the mystery story to which even Jung was a willing subject. The classic mystery narrative mirrors and sparks our own unfolding sense of “I,” with its underlying archetypal patterns which echo those of the path of individuation. The unknown, searching, curiosity, humbleness, openness, honesty, courage – all the aspects of the hero’s journey play a part. And how does an analyst leave space for the dynamics of mystery in searching for the “I,” without letting interpretation crowd it out?

1401 Advanced Psychopathology: Clinical Integration **Tim Pilgrim**
 Fri., Sep. 20, Oct. 18, Nov. 22, Dec. 13 4-6:30pm

Board Room, Arts and Letters Club, 14 Elm St.

The seminar is designed as a forum for integrating Jungian theories of psychopathology with clinical practice. As well as examining the diagnostic methods and clinical tools of analytical psychology, candidates will also consider the DSM IV syndrome classification system to understand its alignments and differences with Jungian theories of psychopathology and clinical engagement. Attention will also be paid to key post-Jungian theories of psychopathology (Fordham, Woodman, Kalsched, Jacoby, Schwartz-Salant). Reading assignment for the first class will be emailed to participants in advance of the class, as well as a list of post-Jungian papers.

Primary texts: Nancy McWilliams, *Psychoanalytic Diagnosis (2nd ed.)*. *Understanding Personality Structure in the Clinical Process*. New York, The Guildford Press, 2011; *Desk Reference of the Diagnostic Criteria from DSM-IV-TR*. A 2-3 page paper will be required. Limited to Stage Two Candidates

1402 Sandplay: Images from the Inner World **Helen Brammer-Savlov**

Sat., Sep. 21 *Studio, Arts and Letters Club, 14 Elm St.* 10am-4:30pm

Thurs., Oct. 17, Nov. 21, Dec. 12 7-9:30pm

Board Room, Arts and Letters Club, 14 Elm St.

In Jung’s crisis following the break with Freud, he found himself exploring a building game from childhood, using stones, water and earth. This released a flow of fantasies that contributed to his appreciation of the Expressive Arts as the “mother of all possibilities, where...the inner and outer worlds are joined together in living union”.

This seminar begins with a morning workshop where candidates will explore the process of building a sand picture through their own direct experience. A

series of exercises will develop awareness of the images and symbols that may arise by letting the embodied wisdom contained in the hands be expressed in a sand picture. All materials will be provided by the seminar leader, including individual sand trays and selections of miniatures.

In the afternoon, we will begin the study of sand pictures formed during an analysis.

In the three subsequent Thursday sessions candidates will continue to study sand pictures and develop approaches to meaning.

Limited to 10 Candidates.

Note On Nomenclature

• The Analyst Training Programme brochure has several audiences
• besides that of the candidates-in-training with the local analysts, and for
• this reason we offer a word of explanation for last year's change in the
• name of our colloquia. Within the Jungian orbit, the traditional description
• of a case control supervisory session is "CQ" or Case Control
• Supervision. This is retained in the course number.

• But in Ontario, the law and regulations governing the Ontario College of
• Registered Psychotherapists are expected to come into effect during
• 2014. By changing the name of the colloquia from “Case Control” to
• “Group Supervision” there is no change in content or structure of the
• CQs, nor any change to OAJA ATP requirements. It is an alignment of
• title only to address any questions about how the CQs map into the
• supervision requirements of the Ontario College.

(Wording changed August 2013 after publication.)

1403 CQ140 Group Supervision Colloquium

Leader: Brian Mayo

Sat., Sep. 21, Dec. 14 *Board Room, Trinity College, 6 Hoskin Ave.* 10am-12pm

Sat., Oct. 19, Nov. 23 *Larkin 213, Trinity College, 6 Hoskin Ave.* 10am-12pm

Limited to 8 Stage Two Candidates.

1404 CQ141 Group Supervision Colloquium

Leader: Cathy Lee Farley

Sun., Sep. 22, Dec. 15 *Board Room, Trinity College, 6 Hoskin Ave. 10am-12pm*

Sun., Oct. 20, Nov. 24 *Larkin 213, Trinity College, 6 Hoskin Ave.* 10am-12pm

Particular focus will be on the frame of analysis and transference/counter-transference issues. Class time will be divided between candidate presentations of case material, and open discussion of assigned readings on the topic of transference/counter-transference.

Limited to 8 Stage Two Candidates.

1405 The Melusine Legends and Other Tales

Dorothy Gardner

Sun., Sep. 22, Oct. 20

10am-12:30pm

Board Room, Arts and Letters Club, 14 Elm St.

Tales and legends of women who are part human and part snake, seal or bird have always been popular and occur across many diverse cultures. Common to all these stories is the motif that these women are associated with cultural development, and can live in partnership with men as long as a certain secrecy about them is respected. These two seminars will explore the popularity of these tales, and how we can relate to them psychologically.

1406 Colour Symbolism

Margaret Meredith

Sun., Sep. 22, Oct. 20, Nov. 24

2-4:30pm

Board Room, Arts and Letters Club, 14 Elm St.

The seminar will consider the symbolic nature of colour in a cultural context as well as within the individual psyche. There will be a selection of readings along with an exploration of various colours chosen by participants.

1407 Psychopharmacology

Ernst Brenken

Fri., Oct. 18, Nov. 22

7:30-9:30pm

Board Room, Arts and Letters Club, 14 Elm St.

The first two hour session will cover basic neuroanatomy and neuro-physiology, general principles of pharmacology, and the classification of various psychotropic medications. The second session will cover common antidepressants, anti-psychotics, mood stabilizers, hypnotics, and anti-anxiety medications.

1408 Working Imaginally With Clients

Paul Benedetto

Sat., Oct. 19

Studio, Arts and Letters Club, 14 Elm St.

10am-4pm

Jung worked imaginally with his own inner figures. He then translated this way of working, and recommended it to clients. He developed tools for this work such as dreaming the dream on and having conversations with dream figures. Since Jung's time, additional tools for working imaginally have developed. In this seminar we will explore these tools. Space will be provided to do imaginal work. Wear comfortable clothing.

1409 Early Theories of Neurosis – Freud, Adler and Jung

Graham Jackson

Sat., Nov. 23

Board Room, Arts and Letters Club, 14 Elm St.

9:30am-12pm

A survey of the ways in which the three “fathers” of depth psychology saw neurotic phenomena. A case will be presented from the viewpoint of each. We will also consider the influence of these ‘historical’ perspectives on contemporary theories of neurosis.

1410 Old Age and the Soul's Process **Patricia Brannigan**
 Sat., Nov. 23 *Board Room, Arts and Letters Club, 14 Elm St.* 1:30-4pm

Carl G. Jung describes old age as a stage in life having its own goal. Helen Luke portrays old age as a stage in life having its own process. With reference to Jung's *Collected Works* and the writings of Jungian counsellor Helen M. Luke, the aim and process of this stage of life are revealed. Excerpts from Homer's *The Odyssey*, Shakespeare's *King Lear* and other selections from modern literature will be used during the workshop to illustrate both the goal and process of old age.

1411 Fairy Tale Enactment **Elisabeth Pomès**
 Sun., Nov. 24 *Board Room, Arts and Letters Club, 14 Elm St.* 10am-12:30pm
 Sat., Dec. 14 *Studio, Arts and Letters Club, 14 Elm St.* 10am-4pm

The first session comprises an introduction to and discussion of the concept and organization of the Fairy Tales Enactment Seminar. Candidates will organize themselves into small groups and choose a Fairy Tale. In between the introductory session and the actual seminar, candidates will have the possibility to meet and prepare the fairy tale enactment. The whole day seminar will offer the possibility of "acting out" the different characters of a chosen fairy tale with the possible use of props and appropriate costumes. A discussion of the fairy tale will follow each enactment.

Limited to 9 Candidates.

1412 Jungians at the Opera 1 CANCELLED **Roger LaRade**
 Sun., Dec. 15 *Board Room, Arts and Letters Club, 14 Elm St.* 10am-4pm

~~Benjamin Britten's *Peter Grimes*, arguably the best opera of the 20th century, was composed after World War II and provides a gripping psychological study of an English village by the sea. The evocative music of the opera personifies the unrelenting power and loneliness of the ocean, and reveals the life of an alienated fisherman with spellbinding drama. Britten said of the opera that it explored "a subject very close to my heart—the struggle of the individual against the masses. The more vicious the society, the more vicious the individual."~~

~~This seminar will provide an opportunity for a Jungian analysis of the opera. We will view a DVD of the opera in the morning and spend the afternoon in discussion. For participants who might enjoy seeing a live performance, *Peter Grimes* will be performed by the Canadian Opera Company in Toronto from October 5 to 26, 2013.~~

Group Supervision Colloquia 2013-2014

CQ140 (1403)

Leader: Brian Mayo

Sat., Sep. 21, Dec. 14 10am-12pm

Board Room, Trinity College

Sat., Oct. 19, Nov. 23 10am-12pm

Larkin 213, Trinity College

CQ141 (1404)

Leader: Cathy Lee Farley

Sun., Sep. 22, Dec. 15 10am-12pm

Board Room, Trinity College

Sun., Oct. 20, Nov. 24 10am-12pm

Larkin 213, Trinity College

CQ142 (1415)

Leader: Paul Benedetto

Sat., Jan. 18, Mar. 22, Apr. 12, May 10

10am-12:30pm

Board Room, Trinity College

CQ143 (1419)

Leader: Margaret Meredith

Sun., Jan. 19, Apr. 13, May 11

2-4:30pm

Board Room, Trinity College

Second Semester - Winter-Spring 2014

1413 Public Lecture

What's With All The Zombies?

Roger LaRade

Thurs., Jan. 16

Studio, Arts and Letters Club, 14 Elm St.

7:30-9:30pm

Zombies have made a comeback. Once a popular subject for B-rated movies, zombies have grown in popularity in the early 21st century. For several seasons a very popular television series has pitted a group of survivors against the unrelenting attacks of hordes of zombies and several movies have featured zombies as title characters. This comes alongside the parallel popularity of vampires. What is going on? Why this renewed fascination with the walking dead? We will explore these questions through a Jungian lens.

1414 Psychopathology Fundamentals, Pt. 2

Tim Pilgrim

Fri., Jan. 17, Feb. 21, Mar. 21, May 9

4-6:30pm

Board Room, Arts and Letters Club, 14 Elm St.

The seminar is designed as a continuation of the 2012-13 course on psychopathology provided to Stage I candidates for learning the basics of psychopathology from a Jungian perspective. The course will continue to examine different diagnostic perspectives (Jungian, psychoanalytic and psychiatric) to broaden insight into major syndromes and associated clinical issues, with an eye to seeing the unique contribution of Jungian 'diagnostics' to our understanding of the psyche and the manifestations of psychological material.

As our primary texts we will continue to use Dougherty and West's *The Matrix and Meaning of Character: An Archetypal and Developmental Approach* (Routledge 2007) and McWilliams' *Psychoanalytic Diagnosis: Understanding Personality Structure in the Clinical Process* (Guildford Press 2nd Edition)

2011). Using these texts and the material from either the practicum experience or other sources (fairy tales, films, plays, dreams, poignant psychological relationships) we will learn about integrating theory and ‘practice.’

Reading assignment for the first class will be emailed to participants in advance of the class. A 2-3 page paper will be required.

Primary texts: Nancy J. Dougherty and Jacqueline J. West, *The Matrix and Meaning of Character: An Archetypal and Developmental Approach*. N.Y., N.Y., Routledge, 2007; Nancy McWilliams, *Psychoanalytic Diagnosis (2nd ed.): Understanding Personality Structure in the Clinical Process*. N.Y., The Guildford Press, 2011. Secondary texts and further reading to be supplied at first meeting. Limited to Stage One Candidates. Jungian “Fundamentals” is important as a prerequisite or concurrent undertaking.

1415 CQ142 Group Supervision Colloquium

Paul Benedetto

Sat., Jan. 18, Mar. 22, Apr. 12, May 10

10am-12:30pm

Board Room, Trinity College, 6 Hoskin Ave..

1416 Ritual and Liminality

Roger LaRade

Sat., Jan. 18

Board Room, Arts and Letters Club, 14 Elm St.

10am-12:30pm

As a symbolic anthropologist, Victor Turner attempted to free the investigation of ritual processes from dependence on the concept of "structure" as the sole dimension of analysis. Turner posited that liminal conditions exist during the transition periods when a ritualist is moving from one status to another. This seminar will delve into this seminal work on the liminal aspects of ritual by Turner. It will present Turner's anthropological observations and theories, outline Jung's psychological approach to ritual and liminality, and explore its practical applications.

Recommended reading: Victor Turner, *The Ritual Process: Structure and Anti-structure*. Ithaca, N.Y., Cornell University Press, 1977

1417 Fairy Tale Seminar

Ingrid Eisermann

Sun., Jan. 19, Feb. 23, Mar. 23, Apr. 13, May 11

9:30am-12pm

Board Room, Arts and Letters Club, 14 Elm St.

This seminar will explore the archetypal patterns in four fairy tales.

1418

Jean Connon-Unda

The Therapeutic Relationship: Transference, Counter-Transference and the Implications of Neuroscience Research for the Analytic Encounter

Sun., Jan. 19, Feb. 23, Mar. 23, Apr. 13

1:30-4pm

Board Room, Arts and Letters Club, 14 Elm St.

In 1929, Jung wrote: “You can exert no influence if you are not susceptible to influence...The patient influences (the analyst) unconsciously ... One of the best known symptoms of this kind is the counter-transference evoked by the transference” (CW 16, para. 163). Recent research in neuroscience confirms

Jung's assertion and reveals that these non-verbal, unconscious processes within the therapeutic dyad "represent right hemisphere to right hemisphere communications of fast acting, automatic regulated and dysregulated emotional states between patient and therapist" (Allan Schore, 2001). In this 4-part seminar we will explore Jung's theory in light of current research with a view to developing our capacity to reflect on the analytic relationship in work with individual clients as well as on the process of change in psychotherapy. Candidates will be required to do some advanced reading (a reading list will be provided to registrants in September) and seminars will consist of presentations and discussion.

1419 CQ143 Group Supervision Colloquium**Margaret Meredith**

Sun., Jan. 19, Apr. 13, May 11

2-4:30pm

Board Room, Trinity College, 6 Hoskin Ave.

Limited to 8 Stage Two Candidates

1420 Bagdad Café**Terilynn Graham Freedman**Thurs., Feb. 20 *Board Room, Arts and Letters Club, 14 Elm St.* 7:30-9:30pmSat., Feb. 22 *Board Room, Arts and Letters Club, 14 Elm St.* 10am-12:30pm

German writer/director Percy Adlon created this "adorable comic fable" (Los Angeles Times) in 1987 and while it might not have been a box-office hit, it remains a genuine treasure in its rich portrayal of the psychological processes involved in transformation and individuation. The film tells the story of two women who could not be more unlike finding themselves through each other deep in the Nevada desert. The film illustrates and develops concepts key to Jungian psychology such as shadow, animus/anima, sacrifice, inflation, the transcendent function, libido, the creative instinct, eros, the tension of the opposites, and, of course, Self, whose manifestation we will explore.

1421 Doing the Work**Graham Jackson**Sat., Feb. 22 *Board Room, Arts and Letters Club, 14 Elm St.* 1:30-4pm

A look into the ways in which analytic work impacts on the analyst, both within and outside the analytic hour. Consideration will be given to both the benefits and dangers of a life devoted to witnessing the psychic journeys of others. 'Strategies' for dealing with the dangers will also be discussed.

1422 Public Lecture**Graham Jackson****Bad Faith**Thurs., Mar. 20 *Board Room, Arts and Letters Club, 14 Elm St.* 7:30-9:30pm

Although Jung had little use for existentialist philosophy and its insistence that existence precedes essence, there are certain existential concepts that are not entirely foreign to Jungian psychology. One of these concepts, *la mauvaise foi*, or bad faith, a term coined by Jean-Paul Sartre to characterize "dishonest and

blameworthy instances of self-deception”, has direct application to the unfolding of the personality and particularly to the role choice plays in that process.

1423 Working Without Dreams

Robert Black

Fri., Mar. 21 Board Room, Arts and Letters Club, 14 Elm St. 7:30-10pm

A seminar discussion about working with the Unconscious when analysts do not bring dreams, including options for working without the ‘traditional’ Jungian language of Self, anima, animus, etc..

1424 Public Lecture

Cathy Lee Farley

Jung, Archetypes and Crop Circles

Thurs., Apr. 10 Studio, Arts and Letters Club, 14 Elm St. 7:30-9:30pm

Every summer fields of grain all over the world play host to the greatest yet very tangible phenomenon of our time – crop circles. While scientific research validates their authenticity, crop circles remain an unexplained mystery. Contributing to their mysterious power is the fact that crop circles bear evidence of sacred geometry, ancient symbols, reference to ancient sacred sites, and relevance to our modern cultural situation. How can we see evidence of Psyche in these incredible patterns in the fields, and what might depth psychology have to say about this phenomenon? Come join in the lecture and exploration of this beautiful mystery.

1425 **CANCELLED**

Geri Daigneault

The Geography and Pathology of the Soul in Three Bergman Films:-

Wild Strawberries, Face to Face, and The Face

Fri., Apr. 11 Board Room, Arts and Letters Club, 14 Elm St. 4:30 7:30pm

Sat., Apr. 12 Board Room, Arts and Letters Club, 14 Elm St. 1:30 5pm

Sat., May 10 Board Room, Arts and Letters Club, 14 Elm St. 1:30 5pm

Bergman has been quoted as saying that "there are two kinds of reality: one that is carried within oneself, and mirrored in the face, then the outer reality." Bergman's close-ups of the human face have become legend. They reveal what is happening in a person's innermost life. Confrontation with the unconscious runs like a scarlet thread throughout these films, as we observe each protagonist striving for individuation. *Face to Face* centers on the breakdown of psychiatrist, Dr. Jenny Isaksson, and her agonizing rebirth. Isaac, in *Wild Strawberries*, is another doctor who is induced into contemplating his soul's pathology. In the film titled *The Face*, we witness a struggle between scientific and aesthetic approaches to life. The film ends with the performing artist's exposure as a fraud. In other words, he loses face. In these films, we witness self-confrontation in waking life, and in dreams and nightmares. Parental pathology and mental illiteracy are prevalent throughout, the lineaments of the soul are laid bare, and the territory between life and death is faced. "For now we see through a glass, darkly; but then face to face...."

1426 The Archetypal Roots of the Analytical Temenos **Robert Black**
Sat., Apr. 12 Board Room, Arts and Letters Club, 14 Elm St. 9:30am-12pm

What is a *temenos*? How did the ancient Greeks use the term – and why was it an important concept? *Dream incubation* was another fundamental ‘tool’ used in ancient Greece and Rome for healing. Both lead us to wonder whether they don’t represent part of the archetypal roots of the analytical profession as we know it. A lecture presentation accompanied by images of the first healing site in antiquity, the Asklepion, will be followed by discussion.



1427 Public Lecture and Seminar **Andrew Benedetto**
Aspects of the Masculine
Lecture Thurs., May 8 Studio, Arts and Letters Club, 14 Elm St. 7:30-9.30pm
Seminar Sat., May 10 9:30am-12:30pm
Board Room, Arts and Letters Club, 14 Elm St.

We often assume a common understanding of the term “the masculine” yet it is a notion based in gender that suggests a range of qualities and can be related to many archetypes. To better understand our assumptions and enhance our appreciation of the topic we will follow highlights from Jung’s *Collected Works* through an abundance of writing about men a generation ago to the present day. This discussion will reinforce the importance of finding meaningful connection to “the masculine” through deeper exploration of our own symbolic material.

The Saturday seminar will focus on a symbolic interpretation of Grimm’s tale “Iron Hans” as we explore the topic of masculinity. Reference will be made to Robert Bly’s *Iron John: A Book About Men* though reading the book in advance is not required.

1428 Jungians at the Opera 2 **CANCELLED**

Roger La Rade

Sun., May 11 ~~Lamps Room, Arts and Letters Club, 14 Elm St. 10am 12:30pm~~

Persée (Perseus) is a lyric tragedy by Jean Baptiste Lully, first performed in 1682 at the Paris Opera. As the title indicates it is an operatic treatment of the Perseus myth. Perseus is the first of the heroes of Greek mythology whose exploits in defeating various archaic monsters provided the founding myths of the Twelve Olympians. Perseus was a demi-god who killed Medusa and claimed Andromeda as his wife, having rescued her from a sea monster sent by Poseidon.

This seminar will provide an opportunity for a Jungian exploration of the archetypal dimensions of the Perseus myth and consideration of Opera as creative expression of archetypal themes. We will view the DVD of the 2004 Opera Atelier production in the morning and spend the afternoon in discussion. For participants who might enjoy seeing a live performance, *Persée* will be performed by Opera Atelier in Toronto from April 26 to May 3, 2014.

Locations and Maps

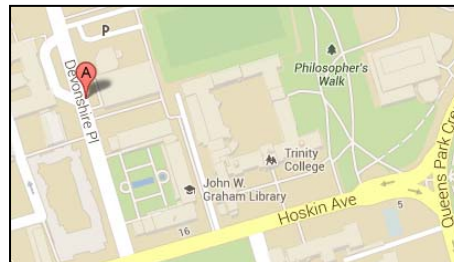


Arts and Letters Club: Board Room, Studio, Lamps Room, 14 Elm St.:

- Enter north side of Elm Street
- Nearest subway stop: Dundas station at Yonge
- Limited parking on both sides of Elm Street.

Trinity College: Larkin 213, Board Room, 6 Hoskin Avenue:

- For Larkin 213 enter east side of Devonshire Place
- For the Board Room enter Trinity College, north side of Hoskin Avenue, between Devonshire Place and Queen's Park Crescent
- Nearest subway stop: Museum, on the Yonge-University-Spadina line
- Limited parking on Hoskin Ave. and Devonshire Place



September 2013

Monday	Tuesday	Wednesday	Thursday	Friday	Saturday	Sunday
						1
2	3	4	5	6	7	8
9	10	11	12	13	14	15
16	17	18	19 Public Lecture 1400 What Is It About A Mystery? 7:30-9:30pm <i>Studio, Arts and Letters Club, 14 Elm St.</i>	20 1401 Advanced Psychopathology 4-6:30pm <i>Board Room, Arts and Letters Club, 14 Elm St.</i>	21 1402 Sandplay 10am-4:30pm <i>Studio, Arts and Letters Club, 14 Elm St.</i> 1403 CQ140 10am-12pm <i>Board Room, Trinity College, 6 Hoskin Ave.</i>	22 1404 CQ141 10am-12pm <i>Board Room, Trinity College, 6 Hoskin Ave.</i> 1405 The Melusine Legends and Other Tales 10am-12:30pm <i>Board Room, Arts and Letters Club, 14 Elm St.</i> 1406 Colour Symbolism 2-4:30pm <i>Board Room, Arts and Letters Club, 14 Elm St.</i>
23 30	24	25	26	27	28	29

For event locations and
directions please see Locations
and Maps on page 12

October 2013

Monday	Tuesday	Wednesday	Thursday	Friday	Saturday	Sunday
	1	2	3	4	5	6
7	8	9	10	11	12	13
14	15	16	17 1402 Sandplay 7-9:30pm <i>Board Room, Arts and Letters Club, 14 Elm St.</i>	18 1401 Advanced Psychopathology 4-6:30pm <i>Board Room, Arts and Letters Club, 14 Elm St.</i> 1407 Psychopharmacology 7:30-9:30pm <i>Board Room, Arts and Letters Club, 14 Elm St.</i>	19 1403 CQ140 10am-12pm <i>Larkin 213, Trinity College, 6 Hoskin Ave.</i> 1408 Working Imaginally With Clients 10am-4pm <i>Studio, Arts and Letters Club, 14 Elm St.</i>	20 1404 CQ141 10am-12pm <i>Larkin 213, Trinity College, 6 Hoskin Ave.</i> 1405 The Melusine Legends and Other Tales 10am-12:30pm <i>Board Room, Arts and Letters Club, 14 Elm St.</i> 1406 Colour Symbolism 2-4:30pm <i>Board Room, Arts and Letters Club, 14 Elm St.</i>
21	22	23	24	25	26	27
28	29	30	31			

For event locations and directions please see Locations and Maps on page 12

November 2013

Monday	Tuesday	Wednesday	Thursday	Friday	Saturday	Sunday
				1	2	3
4	5	6	7	8	9	10
11	12	13	14	15	16	17
18	19	20	21 1402 Sandplay 7-9:30pm <i>Board Room, Arts and Letters Club, 14 Elm St.</i>	22 1401 Advanced Psychopathology 4-6:30pm <i>Board Room, Arts and Letters Club, 14 Elm St.</i> 1407 Psychopharmacology 7:30-9:30pm <i>Board Room, Arts and Letters Club, 14 Elm St.</i>	23 1403 CQ140 10am-12pm <i>Larkin 213, Trinity College, 6 Hoskin Ave.</i> 1409 Early Theories of Neurosis 9:30am-12pm <i>Board Room, Arts and Letters Club, 14 Elm St.</i> 1410 Old Age and the Soul's Process 1:30-4pm <i>Board Room, Arts and Letters Club, 14 Elm St.</i>	24 1404 CQ141 10am-12pm <i>Larkin 213, Trinity College, 6 Hoskin Ave.</i> 1411 Fairy Tale Enactment 10am-12:30pm <i>Board Room, Arts and Letters Club, 14 Elm St.</i> 1406 Colour Symbolism 2-4:30pm <i>Board Room, Arts and Letters Club, 14 Elm St.</i>
25	26	27	28	29	30	

For event locations and
directions please see Locations
and Maps on page 12

December 2013

Monday	Tuesday	Wednesday	Thursday	Friday	Saturday	Sunday
						1
2	3	4	5	6	7	8
9	10	11	12 1402 Sandplay 7-9:30pm <i>Board Room, Arts and Letters Club, 14 Elm St.</i>	13 1401 Advanced Psychopathology 4-6:30pm <i>Board Room, Arts and Letters Club, 14 Elm St.</i>	14 1403 CQ140 10am-12pm <i>Board Room, Trinity College, 6 Hoskin Ave.</i> 1411 Fairy Tale Enactment 10am-4pm <i>Studio, Arts and Letters Club, 14 Elm St.</i>	15 1404 CQ141 10am-12pm <i>Board Room, Trinity College, 6 Hoskin Ave.</i> 1412 Jungians at the Opera 1 10am-4pm <i>Board Room, Arts and Letters Club, 14 Elm St.</i>
For event locations and directions please see Locations and Maps on page 12						
16	17	18	19	20	21	22
23 30	24 31	25	26	27	28	29

January 2014

Monday	Tuesday	Wednesday	Thursday	Friday	Saturday	Sunday
		1	2	3	4	5
6	7	8	9	10	11	12
13	14	15	16 1413 What's With All The Zombies? 7:30-9:30pm <i>Studio, Arts and Letters Club, 14 Elm St.</i>	17 1414 Psychopathology Fundamentals, Pt. 2 4-6:30pm <i>Board Room, Arts and Letters Club, 14 Elm St.</i>	18 1415 CQ142 10am-12:30pm <i>Board Room, Trinity College, 6 Hoskin Ave.</i> 1416 Ritual and Liminality 10am-12:30pm <i>Board Room, Arts and Letters Club, 14 Elm St.</i>	19 1417 Fairy Tale Seminar 9:30am-12pm <i>Board Room, Arts and Letters Club, 14 Elm St.</i> 1418 The Therapeutic Relationship 1:30-4pm <i>Board Room, Arts and Letters Club, 14 Elm St.</i> 1419 CQ143 2-4:30pm <i>Board Room, Trinity College, 6 Hoskin Ave.</i>
20	21	22	23	24	25	26
27	28	29	30	31		

For event locations and
directions please see Locations
and Maps on page 12

February 2014

Monday	Tuesday	Wednesday	Thursday	Friday	Saturday	Sunday
					1	2
3	4	5	6	7	8	9
10	11	12	13	14	15	16
17	18	19	20 1420 Bagdad Café 7:30-9:30pm <i>Board Room, Arts and Letters Club, 14 Elm St.</i>	21 1414 Psychopathology Fundamentals, Pt. 2 4-6:30pm <i>Board Room, Arts and Letters Club, 14 Elm St.</i>	22 1420 Bagdad Café 10am-12:30pm <i>Board Room, Arts and Letters Club, 14 Elm St.</i> 1421 Doing the Work 1:30-4pm <i>Board Room, Arts and Letters Club, 14 Elm St.</i>	23 1417 Fairy Tale Seminar 9:30am-12pm <i>Board Room, Arts and Letters Club, 14 Elm St.</i> 1418 The Therapeutic Relationship 1:30-4pm <i>Board Room, Arts and Letters Club, 14 Elm St.</i>
For event locations and directions please see Locations and Maps on page 12						
24	25	26	27	28		

March 2014

Monday	Tuesday	Wednesday	Thursday	Friday	Saturday	Sunday
					1	2
3	4	5	6	7	8	9
10	11	12	13	14	15	16
17	18	19	20 Public Lecture 1422 Bad Faith 7:30-9:30pm <i>Board Room, Arts and Letters Club, 14 Elm St.</i>	21 1414 Psychopathology Fundamentals, Pt. 2 4-6:30pm <i>Board Room, Arts and Letters Club, 14 Elm St.</i> 1423 Working Without Dreams 7:30-10pm <i>Board Room, Arts and Letters Club, 14 Elm St.</i>	22 1415 CQ142 10am-12:30pm <i>Board Room, Trinity College, 6 Hoskin Ave.</i>	23 1417 Fairy Tale Seminar 9:30am-12pm <i>Board Room, Arts and Letters Club, 14 Elm St.</i> 1418 The Therapeutic Relationship 1:30-4pm <i>Board Room, Arts and Letters Club, 14 Elm St.</i>
For event locations and directions please see Locations and Maps on page 12						
24 31	25	26	27	28	29	30

April 2014

Monday	Tuesday	Wednesday	Thursday	Friday	Saturday	Sunday
	1	2	3	4	5	6
7	8	9	10 Public Lecture 1424 Jung, Archetypes and Crop Circles 7:30- 9:30pm <i>Studio, Arts and Letters Club, 14 Elm St.</i>	11 1425 Geography and Pathology of the Soul 4:30-7:30pm <i>Board Room, Arts and Letters Club, 14 Elm St.</i>	12 1426 The Archetypal Roots of the Analytical Temenos 9:30am-12pm <i>Board Room, Arts and Letters Club, 14 Elm St.</i> 1415 CQ142 10am-12:30pm <i>Board Room, Trinity College, 6 Hoskin Ave.</i> 1425 Geography and Pathology of the Soul 1:30-5pm <i>Board Room, Arts and Letters Club, 14 Elm St.</i>	13 1417 Fairy Tale Seminar 9:30am-12pm <i>Board Room, Arts and Letters Club, 14 Elm St.</i> 1418 The Therapeutic Relationship 1:30-4pm <i>Board Room, Arts and Letters Club, 14 Elm St.</i> 1419 CQ143 2-4:30pm <i>Board Room, Trinity College, 6 Hoskin Ave.</i>
14	15	16	17	18	19	20
21	22	23	24	25	26	27
28	29	30				

For event locations and
directions please see Locations
and Maps on page 12

May 2014

Monday	Tuesday	Wednesday	Thursday	Friday	Saturday	Sunday
			1	2	3	4
5	6	7	8 Public Lecture 1427 Aspects of the Masculine 7:30-9:30pm <i>Studio, Arts and Letters Club, 14 Elm St.</i>	9 1414 Psychopathology Fundamentals, Pt. 2 4-6:30pm <i>Board Room, Arts and Letters Club, 14 Elm St.</i>	10 1427 Aspects of the Masculine 9:30am-12:30pm <i>Board Room, Arts and Letters Club, 14 Elm St.</i> 1415 CQ142 10am-12:30pm <i>Board Room, Trinity College, 6 Hoskin Ave.</i> 1425 Geography and Pathology of the Soul 1:30-5pm <i>Board Room, Arts and Letters Club, 14 Elm St.</i>	11 1417 Fairy Tale Seminar 9:30am-12pm <i>Board Room, Arts and Letters Club, 14 Elm St.</i> 1428 Jungians at the Opera 2 10am-4pm <i>Lamps Room, Arts and Letters Club, 14 Elm St.</i> 1419 CQ143 2-4:30pm <i>Board Room, Trinity College, 6 Hoskin Ave.</i>
For event locations and directions please see Locations and Maps on page 12						
12	13	14	15	16	17	18
19	20	21	22	23	24	25
26	27	28	29	30	31	

2013 - 2014 Faculty

Benedetto, Andrew, M.B.A., Dipl. Analyt. Psych. (Toronto)
Benedetto, Paul, M.A., Dipl. Analyt. Psych. (Zürich)
Brenken, Ernst, M.D., Psychiatrist (Toronto)
Brammer-Savlov, Helen, Dipl. Linguistics, Dipl. Analyt. Psych. (London)
Brannigan, Patricia, M.A., Dipl. Analyt., Psych. (Toronto)
Connon Unda, Jean, M.Ed., Dipl. Analyt. Psych. (Toronto)
Daigneault, Geri, M.Ed., Dipl. Analyt. Psych. (Toronto)
Eisermann, Ingrid, M.A., Dipl. Analyt. Psych. (Toronto)
Farley, Cathy Lee, M.E.D., Dipl. Analyt. Psych. (Zürich)
Gardner, Dorothy, Dipl. Ed., Dipl. Analyt. Psych. (Zürich)
Freedman, Terilynn Graham, M.A., Dipl. Analyt., Psych. (Toronto)
Jackson, Graham, M.L.Sc., Dipl. Analyt. Psych. (Zürich)
LaRade, Roger, M.Div., Dipl. Analyt. Psych. (Toronto)
Mattucci, Lidia, M.A., Dipl. Analyt., Psych. (Toronto)
Mayo, Brian, M.S.W., Dipl. Analyt. Psych. (Zürich)
Meredith, Margaret, M.A., Dipl. Analyt. Psych. (Zürich)
Pilgrim, Tim, M.B.A., Dipl. Analyt. Psych. (IRSJA)
Pomès, Elisabeth, M.Litt., Dipl. Analyt. Psych. (Toronto)
Tomlinson, Mary, LL.M., Dipl. Analyt. Psych. (Zürich)

Office, Fraser Boa Library, and Word & Image Bookshop

14 Elm Street, Toronto 416-961-9767

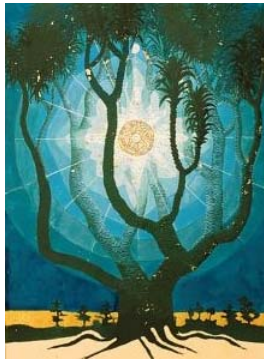
OAJA's library contains a large and growing collection of books, journals, and videotapes on Jungian psychology, including many on the "Recommended Reading" list.

A maximum of three books may be borrowed for up to 4 weeks. Candidates receive a 10% discount at the Word & Image bookshop, which carries only Inner City Books.

Library & Bookshop and Office

Thursdays 11am-6pm

Fridays on training weekends 11am-4pm



2013-2014 Directory of OAJA Analysts

For more detailed and current information please check the website: www.oaja.ca

Toronto:

Andrew Benedetto
416-595-9542
andrewbenedetto105@gmail.com

Paul Benedetto (Senior)
519-265-6468
Paul@JungianAnalysts.com

Robert Black (Senior)
416-966-1588
rm.black@sympatico.ca

Helen Brammer-Savlov (Senior)
416-903-6107
helen_brammer@hotmail.com

Beverly Clarkson (Senior)
416-231-9825
bevclarkson@sympatico.ca

Jean Connon-Unda
416-761-9630
jcunda@sympatico.ca

Caroline Duetz (Senior)
416-469-2423
duetz@interlog.com

Ingrid Eisermann (Senior)
416-494-3945
ieiserma@bell.net

Dorothy Gardner (Senior)
416-929-5996
dorothygardner@rogers.com

Robert Gardner (Senior)
416-925-6546
robgardner@rogers.com

Judith Harris (Senior)
416-967-0311
Judith.harris@bell.net

Graham Jackson (Senior)
416-530-0074
grahamjackson13@rogers.com

Roger LaRade (Senior)
416-937-9459
rlarade@rogers.com

Lidia Mattucci
416-570-9389
lidiamattucci@bellnet.ca

Brian Mayo (Senior)
brian_mayo48@hotmail.com

Margaret Meredith (Senior)
416-598-1472

Tim Pilgrim
416-920-2275
tim.pilgrim@sympatico.ca

Elisabeth Pomès
416-769-8511 H
416-408-2824 x722 W
elisabethpomes@sympatico.ca

Laurie Savlov (Senior)
416-903-2072
laurie@jungian-analysis.net

Daryl Sharp (Senior)
416-927-0355
daryl@innercitybooks.net

Mary Tomlinson
416-200-9039
marytomlinson9@gmail.com

Boshira Toomey
416-596-7985
boshira@sympatico.ca

Halton Region:

Brian Collinson
905-337-3946
brian@briancollinson.ca

Durham Region:

Helen Brammer-Savlov (Senior)
905-982-1598
helen_brammer@hotmail.com

Laurie Savlov (Senior)
905-982-1598
laurie@jungian-analysis.net

London:

Douglas Cann (Senior)
519-672-7355
drcann@bellnet.ca

Terilynn Graham Freedman
519-858-3899 H
519-619-1995 W
terilynn@bell.net

Prince Edward County:

Geri Daigneault (Senior)
613-393-3937 H
416-573-2721 C/W
gmhd13@hotmail.com

Ottawa:

John Affleck (Senior)
613-733-1118
j_affleck@primus.ca

John P. Dourley (Senior)
613-231-3262
dourley@sympatico.ca

Rosemarie Kennedy (Senior)
613-747-1766
rkennedy@rogers.com

Rosemary Murray-Lachapelle
613-619-7556
rmurray5555@gmail.com

Waterloo:

Cathy Lee Farley (Senior)
519-885-4324
clf@gto.net

Windsor:

Paul Adams
519-971-9224
psadams@windsor.igs.net

Guelph:

Paul Benedetto (Senior)
519-265-6468
Paul@JungianAnalysts.com

Patricia Brannigan
519-265-1360
pattibrannigan@gmail.com

Montreal:

David Pressault
514-524-4684 H/W
davidpressault@gmail.com

USA:

Sherin (Sherrie) Shumavon
513-421-2259 H
513-520-8352 C
sher.shumavon@gmail.com